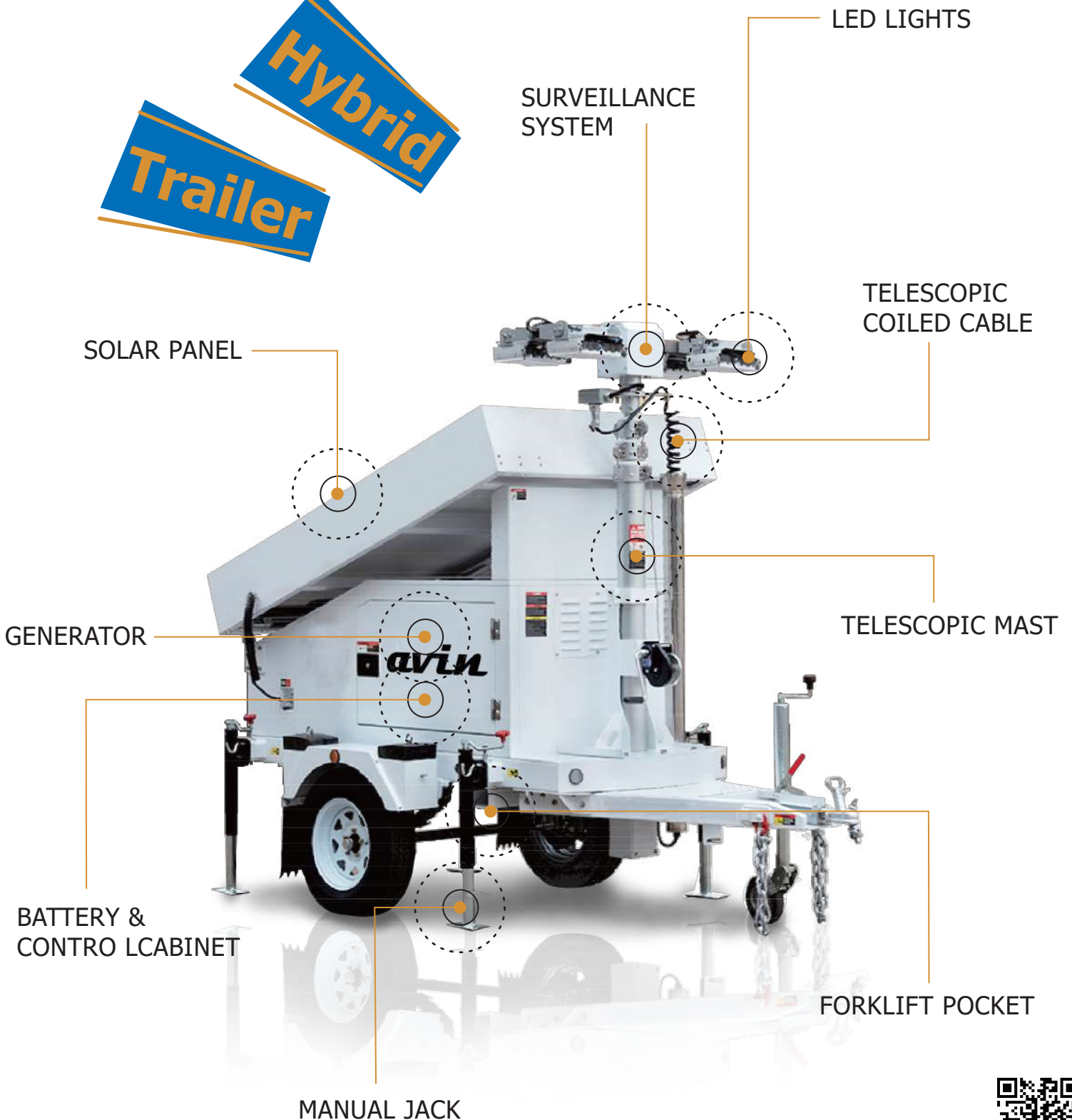
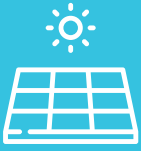


Icoe

Mobility Energy Storage System

Hybrid
Trailer





Solar



Generator



Container Carrying Capacity



Rechargeable Battery



IOT



LED Lighting Control



Electrical Energy Monitoring



GPS For Real-Time Location



Anti-theft Alarm



Usage Management

Optional

Accessories	Maximum Qty
CCTV	IPC: 6 or PTZ: 6
Speaker	1
Alarm Bell	1
IOT	1

Trailer Specification



Icoe I

Operation

L144 x W133 x H256 in
(L366 x W338.5 x H650 cm)

Towing

L144 x W66 x H99 in
(L366 x W167 x H252 cm)

Weight (Battery Excluded)

3692 lb / 1675 kg

Mast Max Height

19.68 ft / 600 cm

Hitch Ball

50 mm

Solar Panel

3*340/455 W

Battery Capacity

10.8 kW Gel-battery

Controller Model

MPPT

LED Lights

4*100 W

Lights Output Total

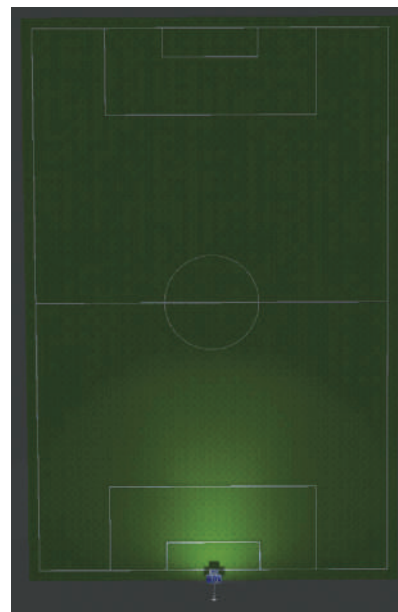
60000 Lm

Runtime

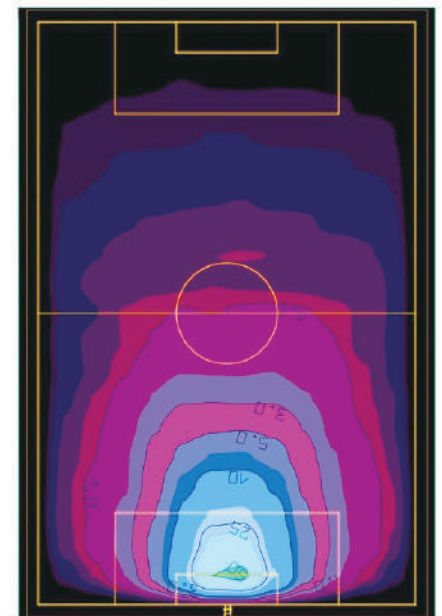
60 Hr

Back-Up Cgarging

5KW Diesel Genset



Lighting area: 358 x 236 ft.



0.10 0.20 0.30 0.50 0.75 1.00 2.00 3.00 5.00 7.50 10 20 30 50 75 [lx]